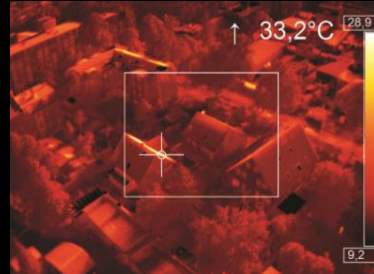


Línea de Cámaras Térmicas Optris L.W.



FEATURES

- Full radiometric IR inspection with 382 x 288 pixels in 12 ms per frame
- 380 g two-piece design with minimized camera head weight
- Simultaneous 20 Hz video signal generation parallel to 35 Hz on board radiometric recording
- Flexible data acquisition and analysis software PI Connect
- GigE connection for after flight video download and software adjustments via "remote desktop"
- Support for HD video camera (GoPro) readout via additional USB port

